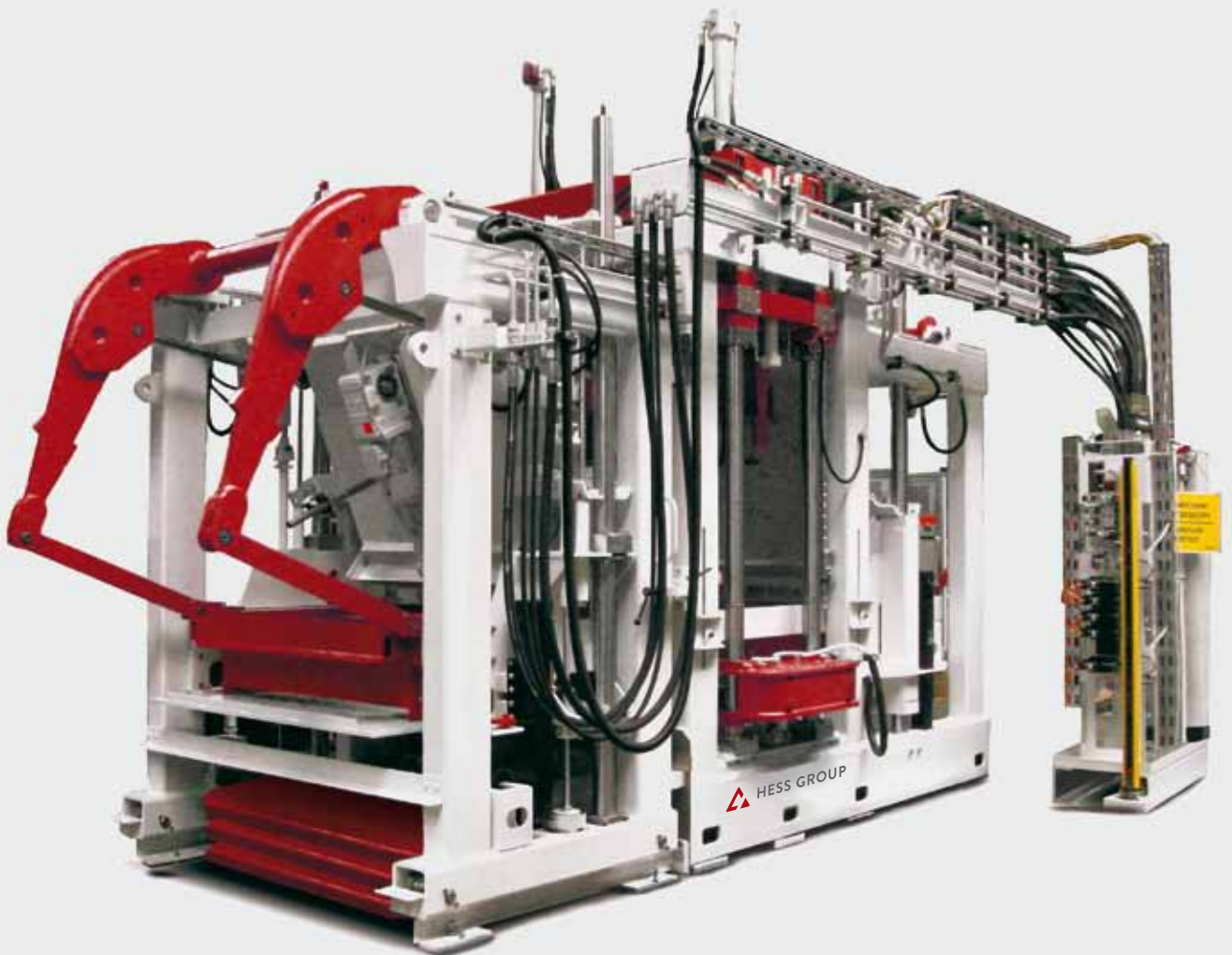


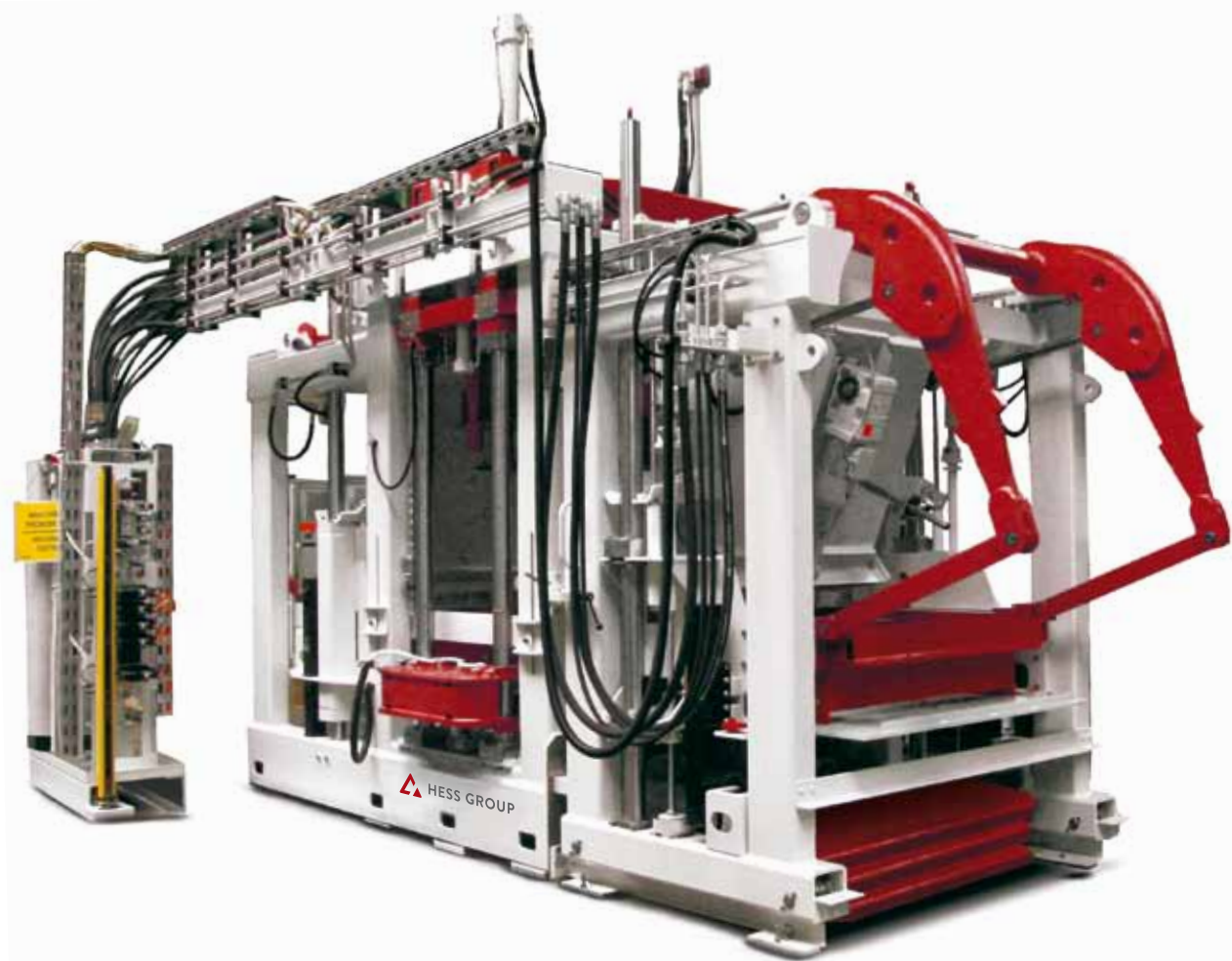
A member of **TOPWERK**

 **HESS GROUP**

RH 1400-3



WE PUT CONCRETE INTO SHAPE



Output. Quality. Cost-effective.
MULTIMAT RH 1400 .

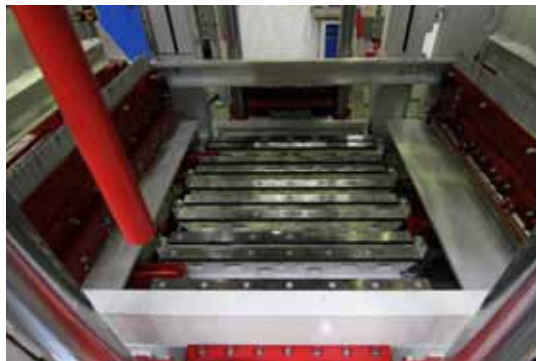
The RH 1400 optimizes cost-efficiency with performance for an Intelligent Investment in the production of high quality concrete products. Complete with its own handling system, it is now possible for customers to grow or expand their market through the advantages of a big board plant at a manageable investment level.

Technical data*

production board (mm)**		1.400 x 1.100
production area (mm)**		1.300 x 1.050
min. product height (mm)		25
max. product height (mm)		400
dead weight approx. (kg)		22.500
paver 10x20x6 without face mix	cycle time (s)	13
	m² in 8h	2.033
	qty stones/form	54
paver 10x20x6 with face mix	cycle time (s)	17
	m² in 8h	1.555
	qty stones/form	54
hollow block 20x40x20	cycle time (s)	16
	quantity in 8h	18.360
	qty stones/form	12

Pallet depth maximum (mm)	1100
Pallet width maximum (mm)	1400
Minimum manufacturing height (mm)	25
Maximum manufacturing height (mm)	400
Mechatronic, frequency control	●
Tamper head block height stops 4 pcs.	○
Tamper head clamping, screwed	●
Tamper head clamping, pneumatic	○
Tamper head cross cleaner, straight	○
Mold clamping, pneumatic	●
Hydraulic function for mold flaps	○
Mold change, manual	●
Mold change crane	○
Coarse mix Colormix drawer	○
Coarse mix silo, silo lining PA/Hardox	○
Coarse mix filler box with agitator cylinder drive	●
Pneumatic scraper face mix filler box	○
Face mix filler cart with planing roller	○
Face mix Colormix drawer	○
Face mix silo, silo lining PA/Hardox	○
Electrical vertical adjustment charger	○
Drawplate device at pallet transport	○
Core pulling device, separately	○
Styrofoam inserter, swiveling	○
Cooling tower for hydraulics	○

● = Standard equipment ○ = selectable as an option



Vibration table



Pneumatic mold clamping (optional)



Pneumatic tamper head clamping (optional)



Filler box with level indicator and driven agitator



Control panel



Colored pavers



Slabs



Wall bricks



Polygonal pavers



Colored pavers



Curbstones (washed out)



Hollow blocks

Technical data block machines*

		RH 500	RH 600	RH 1400	RH 1500	RH 2000 (M-Version)
production board (mm)**		1.200 x 670	1.400 x 700	1.400 x 1.100	1.400 x 1.100	1.400 x 1.300
production area (mm)**		1.100 x 620	1.300 x 650	1.300 x 1.050	1.300 x 1.050	1.300 x 1.250
min. product height (mm)		25	25	25	25	25
max. product height (mm)		300	300	400	500	500
dead weight approx. (kg)		7.700	14.000	22.500	46.000	48.000
paver 10x20x6 without face mix	cycle time (s)	17	14	13	10,5	10
	m² in 8h	863	1.258	2.033	2.517	3.230
	qty stones/ form	30	36	54	54	66
paver 10x20x6 with face mix	cycle time (s)	22	18	17	12,5	11,5
	m² in 8h	667	979	1.554	2.114	2.809
	qty stones/ form	30	36	54	54	66
hollow block 20x40x20	cycle time (s)	20	16	16	14,5	13,5
	qty in 8h	6.120	13.770	18.360	20.258	32.640
	qty stones/ form	5	9	12	12	18

Technical data mixers*

		SM 400	SM 1500	SM 2250	SM 3375	SM 4500
dry filling	l	400	1.500	2.250	3375	4500
max. filling weight	kg	640	2.400	3.600	5.400	7.200
concrete volume per batch	m³	0,270	1	1,5	2,25	3
main drive	kW	15	22	30	2x22	3x22
no. of mixing stars (individually driven)	pcs	2	2	2	3	3
skip hoist drive	kW	5,5	18,5	18,5	22	30

HESS Control system

- Control Panel adjustable for height and screen angle to match operator's preference or need
- User Interface has touched panel clearly arranged with intuitive graphics
- Symbolic buttons manage specific parameters to improve understanding within shortest time
- Adjusting one parameter automatically and correctly changes corresponding pre-set parameters without further complex input of many parameters
- Many adjustments are set by a simple slider to allow newer operators to become familiar with logic and operating knowledge



Filler box controlled by sliders



Remote control

Further features of operator controls:

- Automatic mold change can be supervised by a remote control directly at the machine
- Settings for molds and product groups are saved and automatically retrieved
- Operator control extends throughout entire plant work centers (Mixing/Batching; Production; Curing; Handling; Treatment; and Packaging)



HESS Production Statistics (Industry 4.0)

It is important for operators and supervisors to have access to critical production data to assess the performance status of the product orders to better serve customers and manage profitability. All relevant information is collected in a Microsoft SQL database is retrievable by authorized managers on their monitors, or remotely via web-based visualization screens.

Features of the HESS Production Statistics:

- Data is sorted by location, plant, and plant equipment
- Multiple facilities can be monitored and evaluated
- Data is accessible via mobile devices (smartphones or tablets) anytime and anywhere
- Included as standard with new installations. Retrofits are possible
- Data for each work center (mixers; production machines; finger cars; curing chambers; splitters; etc.) are collected and tracked
- Data is available for import into business system

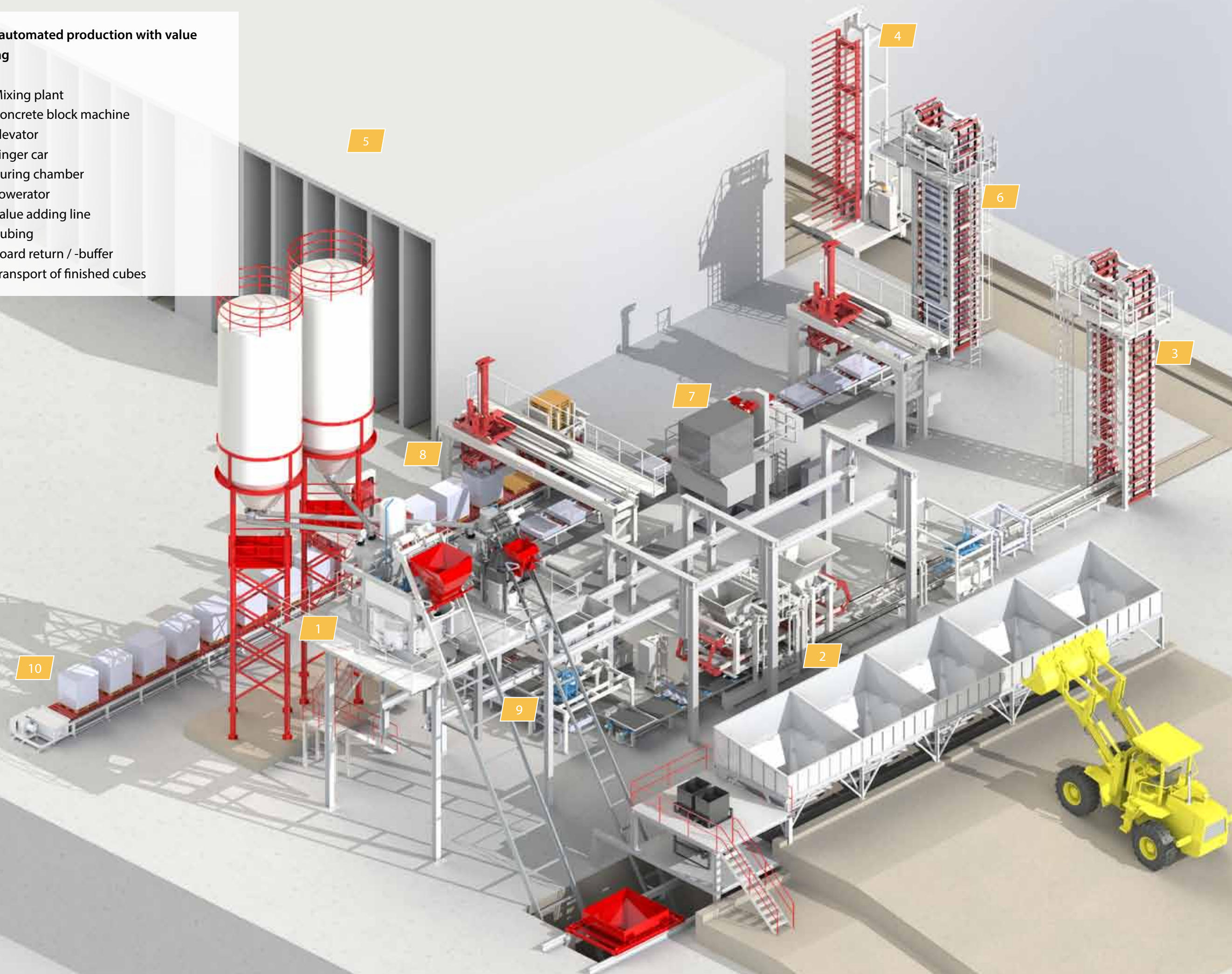
As the industry demonstrates increasing digitalization of production processes (Industry 4.0) the HESS Production Statistics supports continuous improvement programs and other manufacturing excellence initiatives.

- Digital chamber and storage administration
- Link to ERP Systems (SAP, Navision, Oracle)
- Integration of parametric value data for quality control
- Product tracking
- Integration into customer-specific order management



Fully automated production with value adding

1. Mixing plant
2. Concrete block machine
3. Elevator
4. Finger car
5. Curing chamber
6. Lowerator
7. Value adding line
8. Cubing
9. Board return / -buffer
10. Transport of finished cubes





Safer. Cleaner. Perfect. HESS Mixing Technology.

The production of high quality concrete products requires mixing technology that delivers precise results each and every batch. Hess SM-Series mixing technology consistently dispenses the perfect concrete mix in the shortest time. HESS offers complete mixing plant technology including dosing units for aggregates, cement, and color-blended concrete.

The SM-Series of planetary mixers feature:

- Self-supporting construction with lower and upper frame
- Separate drives (for tool plate and mixing stars)
- Stopping and starting the loaded mixer is possible anytime.
- Two large double doors for easy and safe clean-up and maintenance operations
- Two large discharge openings in the mixer floor
- Clean-out time significantly reduced due to minimal deposit build-up (special water inlets)
- Special cement input device allows dust-free cement adding operation (optional)
- High mixing intensity most favorable for low cement/water ratio concrete mix designs



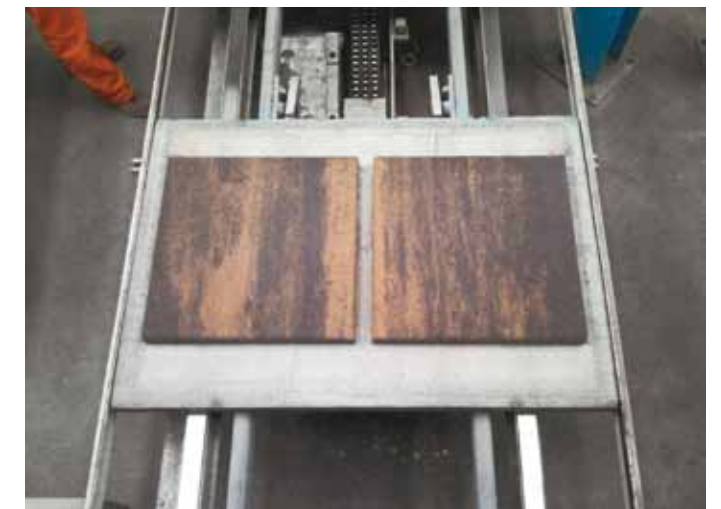
Face concrete mixer



Color-mix dosing belts



Interior view



Color-mix products



Interior view



Dry Side

Balance. Speed. Ideal.
Transfer and handling systems.

HESS supports the efficiency of their high quality and high volume mixing and production systems with matching proficiency in the transfer and handling systems. The necessity to transfer, buffer, and store fresh and cured product is essential to sustaining a balanced flow rate while maximizing the throughput pace of finished product.

More and more, manufactures need to harmonize the wet side and dry side cycle times across a wider range of product requirements. HESS has the know-how and equipment technology to optimize these balancing logistics to deliver the highest quality, greatest output, and lowest unit cost.

Our fully-automated transfer, handling, treatment and packaging lines communicate with each other and are intuitively displayed on the operator control screen for smarter insights and understanding.



Buffer rack



Ejection station



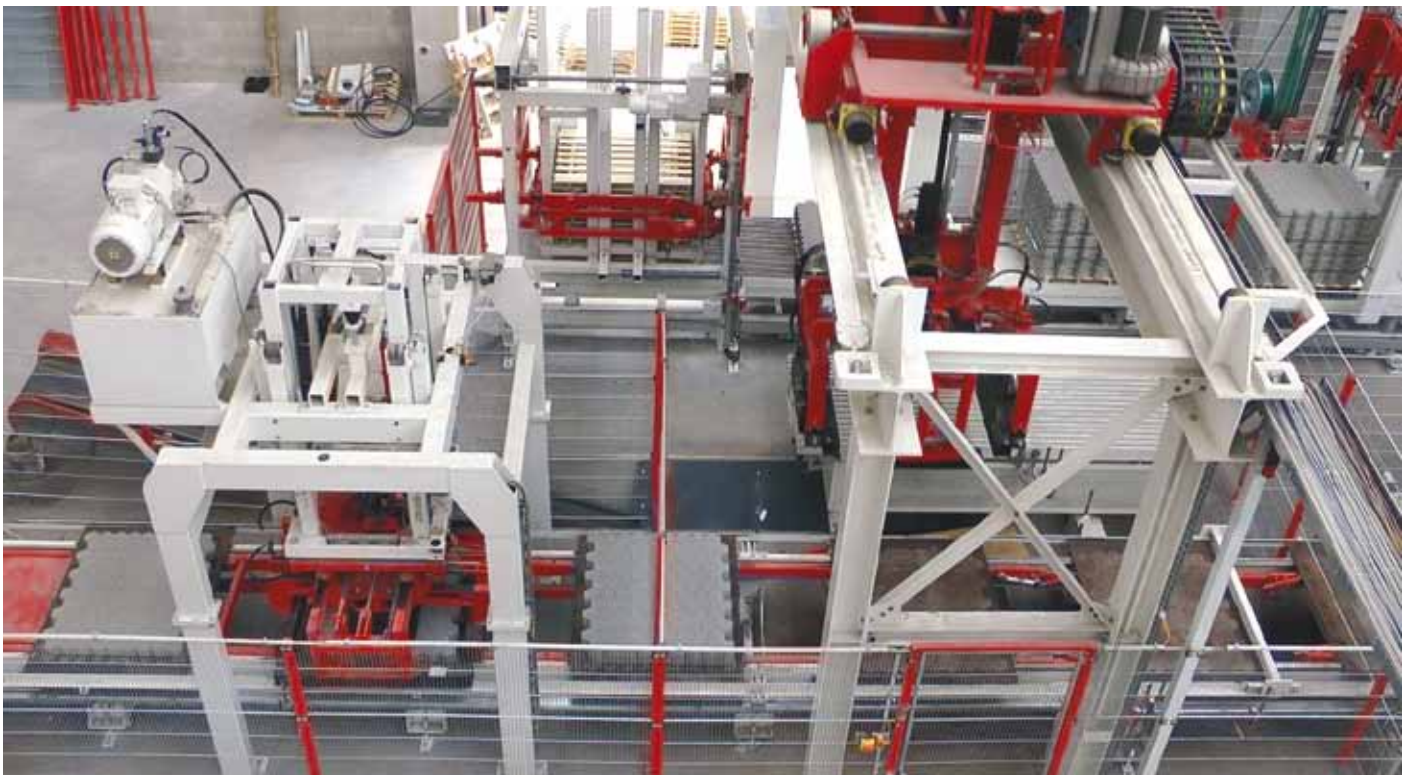
Lowerator with bypass



Finger car



Washing system



Stone layer doubling unit and cuber

Available. Extensive. Expert. HESS After Sales Service.

Our expert service team is available anytime to answer any question you may have. Our primary goal is to support your operation as if it were our very own. We are proud to share the expertise gained from our global experience for your benefit. This industry knowledge supports the following areas of our supply chain departments:



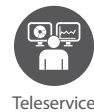
Spare parts

High quality spare parts and competent technical advice - worldwide



Help-Desk

Problem solving with capable assistance – around the clock



Teleservice

Efficient assistance and technical support via teleservice



Monitoring

Secure – fast – information available everywhere



Consulting

Professional guidance on all questions regarding process engineering



Retrofit

Optimized retrofits due to continuous developments



HDPS

HDPS Software - Your benefits: Information is available, wherever it is needed!

- In production and maintenance
- In logistics regarding the optimization of parts inventory
- In material scheduling to procure necessary spare- and wear parts
- Customized information
- More efficient communication between operator and service technician
- Customer-specific language possible



Training Academy

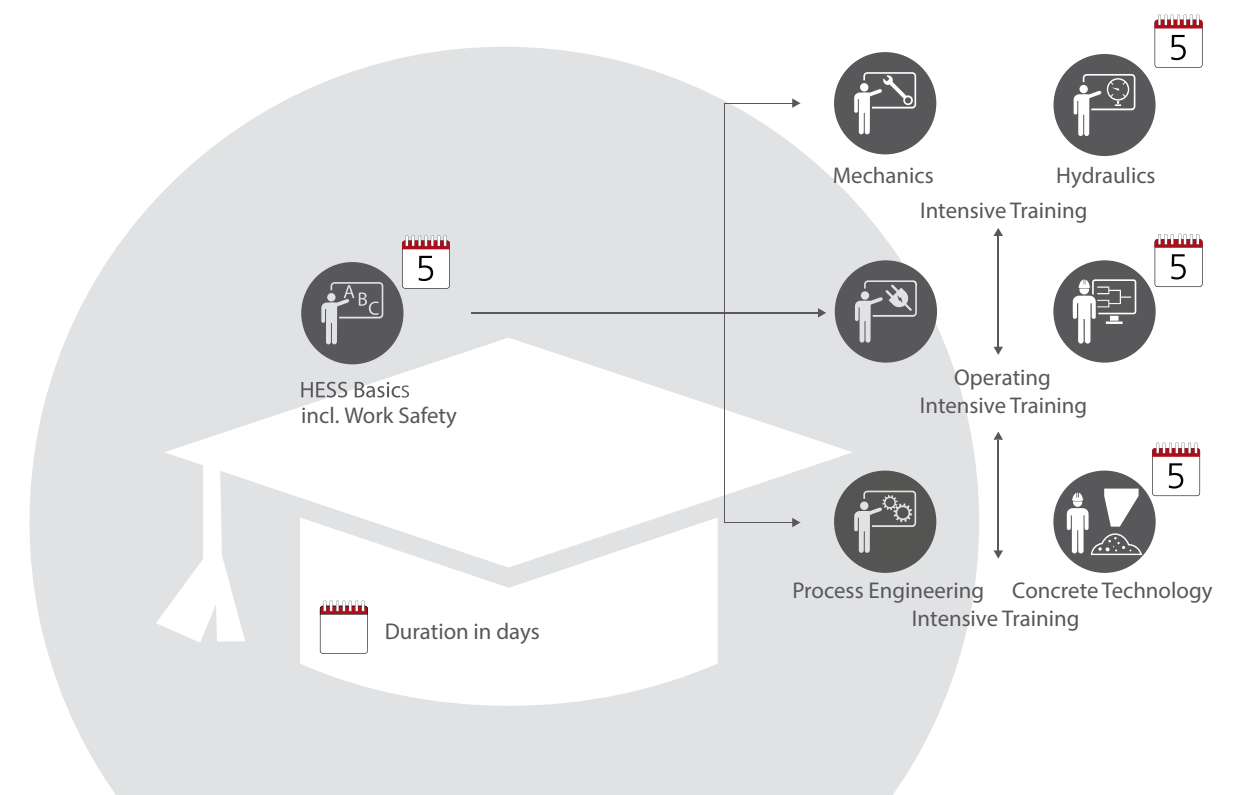
The HESS After Sales Service offers training programs for your staff near the headquarters in Burbach:

- Consecutive training courses
- Gradual training in: Machine operation, maintenance and concrete technology

Benefit from our know-how and many years of experience :

- Practical exercises with specific designed models or machinery parts
- Visualization of complex motion sequences using animations and videos
- Digital transmission of training material by tablet
- Acquired knowledge available anywhere and anytime
- Optimum training and know-how transfer from the beginning
- Systematic gain of expertise by intensive training

Productivity increase by Best Practice, prevention of drop outs and reduction of setup times through an expertwise work approach are just a few advantages resulting from the training.



HESS Group GmbH

Freier-Grund-Straße 123
57299 Burbach-Wahlbach, Germany

Phone: +49 2736 4976 0
Fax: +49 2736 4976 620
E-Mail: info@hessgroup.com
Internet: www.hessgroup.com

